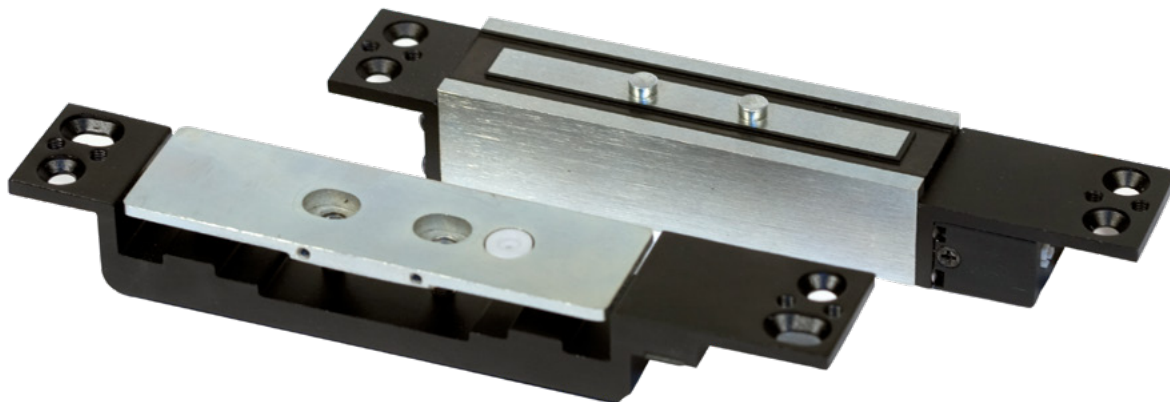


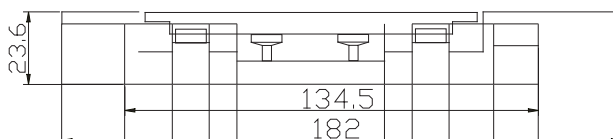
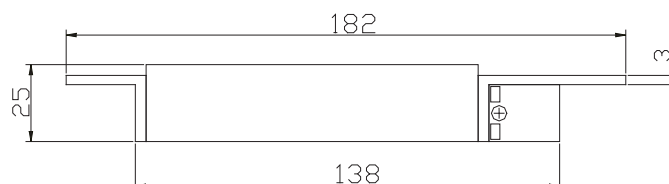
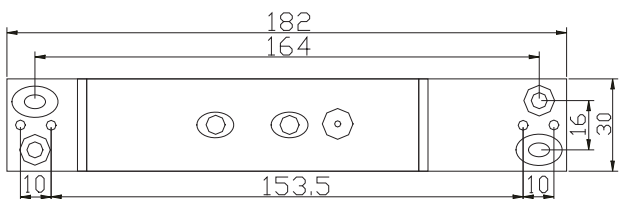
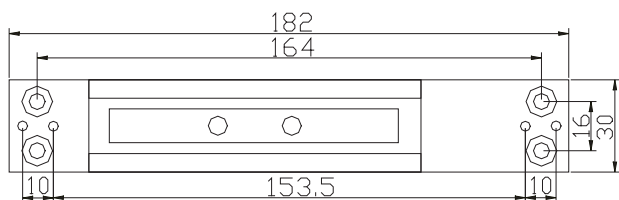


Shearlock

SL-500 - 12/24V DC



➤ SL-500



- ✓ Multispanning 12/24 V DC
- ✓ Geschikt voor dubbele deuren

	SL-500
Montage	Inbouw
Houdkracht	1200 Kg
Werking	Spanningsloos los (vergrendeld onder spanning)
Voedingsspanning	12/24 V DC
Verbruik onder druk	900 mA
Verbruik in rust	220/190 mA
Vergrendel contact	Wisselcontact (COM/NO/NC)
Deurpositie contact	Deur open / gesloten - NO/NC
Werkings temperatuur / RV	-10 tot + 70° C / 0 tot 85 % RV
Afmetingen (l x h x d)	Magneet = 182 x 30 x 25 mm / Tegenplaat = 182 x 30 x 23,6 mm
Brutogewicht	1,9 Kg

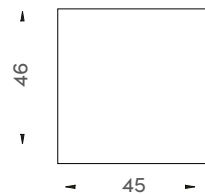


Shearlock

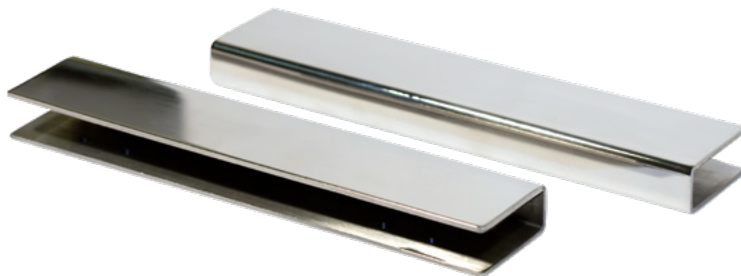
SL-500 - Accessoires



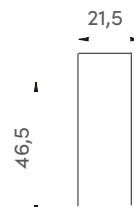
➤ BR-500
Opbouwbehuizingen voor
SL-500



	BR-500
Montage	Opbouw
Afmetingen (l x h x d)	203 x 46 x 45 (x2)
Brutogewicht	0,75 Kg



➤ UB-500
Montagekit SL-500 voor op glazen
deur



	UB-500
Montage	Opbouw
Dikte van het glas	9 tot 12 mm
Afmetingen (l x h x d)	203 x 46,5 x 21,5 mm (x 2)
Brutogewicht	1,24 Kg